

Bus Converter

48V Input / 9.4V Output / 36A



07CM-36S10L

- Ideal for Intermediate Bus Architectures
- Industry standard quarter-brick package
- Up to 300W at 96% efficiency
- 1500V isolation
- Safety Agency Approvals



Description

The 07CM-36S “Cimarron” Series are isolated DC/DC converters that operate from a nominal 48V source. These converters are intended to provide isolation and step down to generate an intermediate bus for the purpose of powering non-isolated Point-of-Load (POL) converters. These units will provide up to 300W of output power from a 54V input. These units are designed to be highly efficient and very low cost and are thus unregulated. The downstream POL converters will provide the precise regulation required by the load. Features include remote on/off, over current protection and undervoltage lockout. These converters are provided in an industry standard quarter-brick package.

Part Selection

Output Voltage	Input Voltage	Max. Output Current	Max. Output Power	Typical Efficiency	Model Number
9.4V	48V	36A	300W	96%	07CM-36S10L

Input Specifications

Parameter	Min	Typ	Max	Notes
Input Voltage Range	36 VDC		55 VDC	
Input Current (no load)			120mA	
Input Current (full load)			7.2	
Reflected Ripple Current (pk-pk)			50mA rms 100mA pk-pk	with a 12uH source inductor at nom. Vin and full load.
Undervoltage Lockout				
Turn-on		35.3 VDC		
Turn off		34.0 VDC		
Overvoltage Lockout		57.1 VDC		

Output Specifications

Parameter	Min	Typ	Max	Notes
Output Voltage				
36Vin		7.1		Setpoint at no load.
48Vin		9.4		
55Vin		10.8		
Output Current	0A		36A	
Output Power			300W	
Load Regulation			0.4V	
Ripple and Noise			175mV pk-pk	0 to 20MHz Bandwidth Use 4, 22uF ceramic caps on output
Load Capacitance	88uF		3000uF	

Bus Converter

48V Input / 9.4V Output / 36A



Output Specifications (continued)

Parameter	Min	Typ	Max	Notes
Transient Response Max deviation Recovery to within $\pm 1\%$		150mV 50uS	250mV 100uS	di/dt = 0.1A/uS, Vin = 48VDC Ta = 25°C, 25% load change.

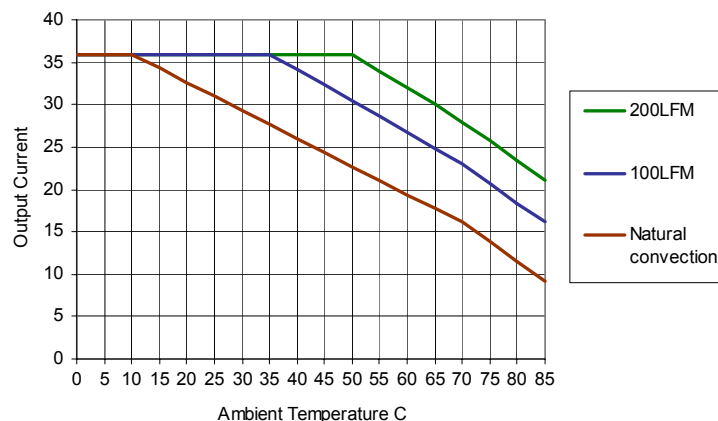
General Specifications

Parameter	Specification
Switching Frequency	128kHz typical (fixed)
Dimensions	
inches	2.28 x 1.45 x .477
mm	57.9 x 36.8 x 12.1
Weight	TBD
Operating Temperature	-40°C to 85°C
Non-Operating Temperature	-55°C to 125°C
Overtemp Shutdown	135°C (10°C hysteresis) Note: measured on Q4
Protection Features	
Short circuit	Latching
Over current	110% to 125% max Io
Undervoltage	UVLO Vin < 35.0
Overvoltage	OVSD Vin > 57.0
Remote On/Off	
Active Low	Low: 0V to 0.4V
(Optional Active High)	High: 2.0 V to 20V
Turn on delay	3.0ms (typ.)
Output voltage rise time	5.0ms (typ.)
Safety Agency Approvals (pending)	UL / cUL Recognized Certified to EN60950

Pin Connections

Pin	Function
1	+ Vin
2	Remote On/Off
3	- Vin
4	- Vout
5	+ Vout

Derating @ 38VDC Input



©2004 Bel Fuse Inc. Specifications subject to change without notice 050604

CORPORATE

Bel Fuse Inc.
206 Van Vorst Street
Jersey City, NJ 07302
Tel 201-432-0463
Fax 201-432-9542
www.belfuse.com

FAR EAST

Bel Fuse Ltd.
8F/ 8 Luk Hop Street
San Po Kong
Kowloon, Hong Kong
Tel 852-2328-5515
Fax 852-2352-3706
www.belfuse.com

EUROPE

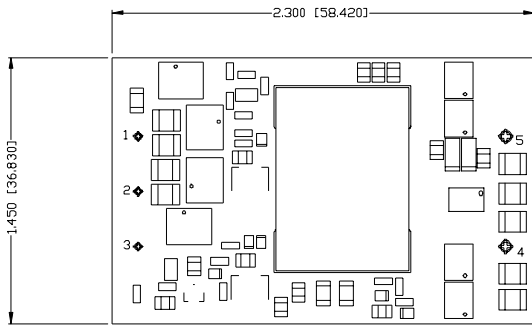
Bel Fuse Europe Ltd.
Preston Technology Management Centre
Marsh Lane, Suite G7, Preston
Lancashire, PR1 8UD, U.K.
Tel 44-1772-556601
Fax 44-1772-888366
www.belfuse.com

Bus Converter

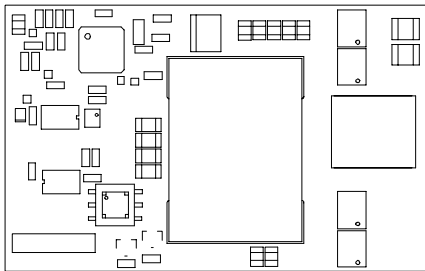
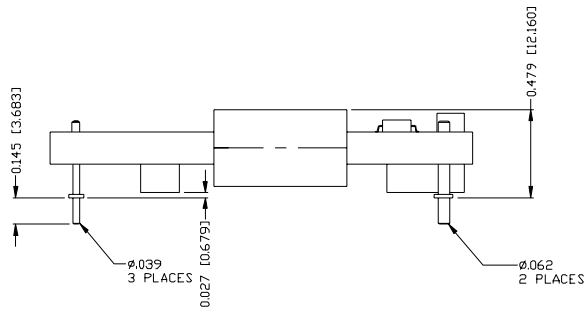
48V Input / 9.4V Output / 36A



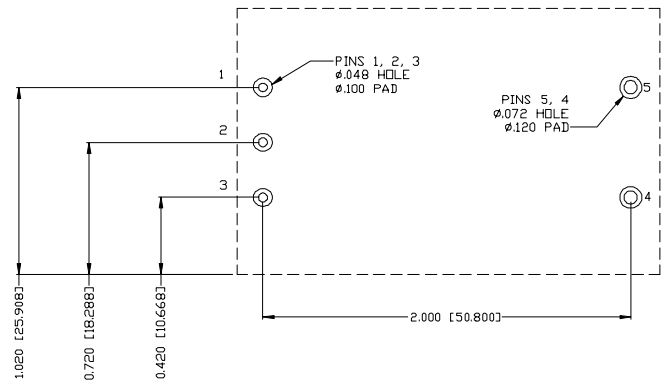
Mechanical Information:



PIN ASSIGNMENTS	PIN DIAMETER
1 +VIN	.039
2 ON/OFF	.039
3 -VIN	.039
4 -VDUT	.062
5 +VDUT	.062



RECOMENDED PCB FOOTPRINT



Bus Converter

48V Input / 9.4V Output / 36A

bel
POWER PRODUCTS

Thermal Images:

Test Conditions:

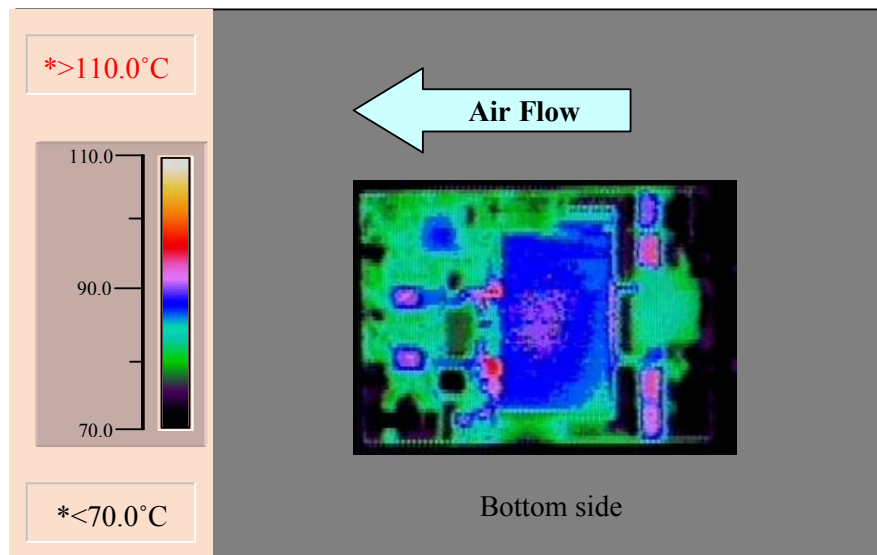
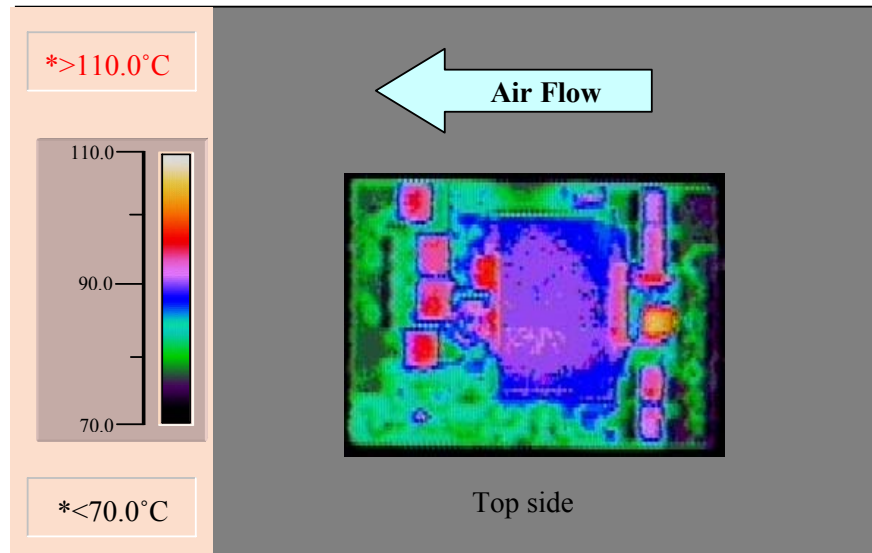
Input Voltage: 39vdc

Output current: 32A

Output power; 240w

Airflow: 200lfm

Ambient: 55C



©2004 Bel Fuse Inc. Specifications subject to change without notice 050604

CORPORATE

Bel Fuse Inc.
206 Van Vorst Street
Jersey City, NJ 07302
Tel 201-432-0463
Fax 201-432-9542
www.belfuse.com

FAR EAST

Bel Fuse Ltd.
8F/ 8 Luk Hop Street
San Po Kong
Kowloon, Hong Kong
Tel 852-2328-5515
Fax 852-2352-3706
www.belfuse.com

EUROPE

Bel Fuse Europe Ltd.
Preston Technology Management Centre
Marsh Lane, Suite G7, Preston
Lancashire, PR1 8UD, U.K.
Tel 44-1772-556601
Fax 44-1772-888366
www.belfuse.com