

EP0800-U Rectifier

42Vdc to 58Vdc, 90Vac to 290Vac Input, 800W Output

description

The EP0800-U rectifier is a single phase, hot-pluggable, fan cooled rectifier that provides up to 800W of highly reliable DC power. This cost-effective reliable rectifier offers the optimal 1U shelf solution for space critical applications. The constant output power characteristics as well as the extended temperature range, universal AC input voltage range and compact size are key attributes that make this rectifier the right choice for your power needs.

This rectifier is applicable for indoor and outdoor environments especially where there are equipment depth and height restrictions. The EP0800-U communicates digitally to the Galaxy Pulsar controller family over a RS485 bus to add extensive monitoring and alarm management facilities. EP0800-U rectifiers support parallel, redundant and hot swap installations. Its flexible and sophisticated feature set makes this front-end supply an excellent choice for power in a variety of application spaces.



applications

- Telecommunication Networks
- Data Networks
- Fiber in the Loop
- Indoor / Outdoor Wireless
- Transmission
- Digital Subscriber Line (DSL)
- PBX
- Routers/Switches

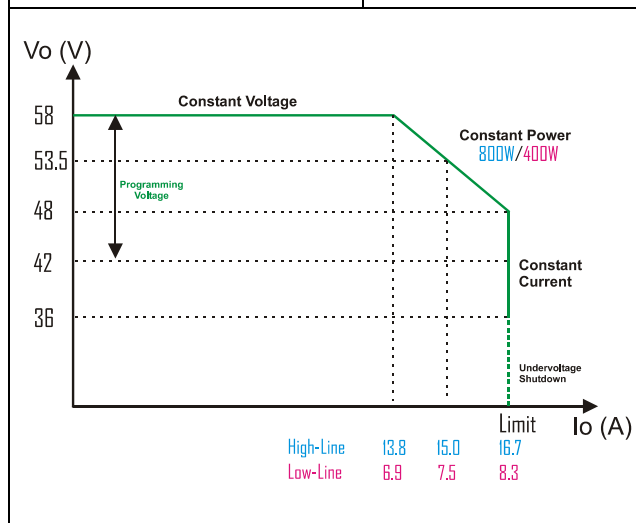
key features

- Universal AC input
- Extended temperature range
- Output power up to 800W
- Hot pluggable
- Analog load sharing
- Front panel LED indicators
- 1U height, minimized depth
- Redundant fan cooling
- RoHS compliant
- UL recognized
- CE marked

specifications

Input	
Voltage Range Low-Line High-Line	90-156* Vac (400W) 156*-290 Vac (800W) *150-180 Vac (500W)
Input Frequency	45-65 Hz
Input Current	5 Arms
Inrush Transient	14.9 Apk
Total Harmonic Distortion THD	< 5 %
Power Factor	~1.0
Holdup Time	>10 ms full power
EMC Conducted	EN55022 Class B

Output	
Voltage Nominal	53.5 Vdc
Voltage Adjust Range	42-58 Vdc (software control)
Rated Output Current Low-Line High-Line	7.5 Adc max 15.0 Adc max
Rated Output Power Low-Line High-Line	400 W 800 W
Psophometric Noise	<2 mV max
Ripple	<200 mVpkpk
Overvoltage Protection	59.5 Vdc
EMC Conducted	EN55022 Class A
Output Characteristics	(See chart)



General	
Cooling	Redundant Fan Cooled
Efficiency	>90%
Heat Dissipation	97 W / 331 BTU

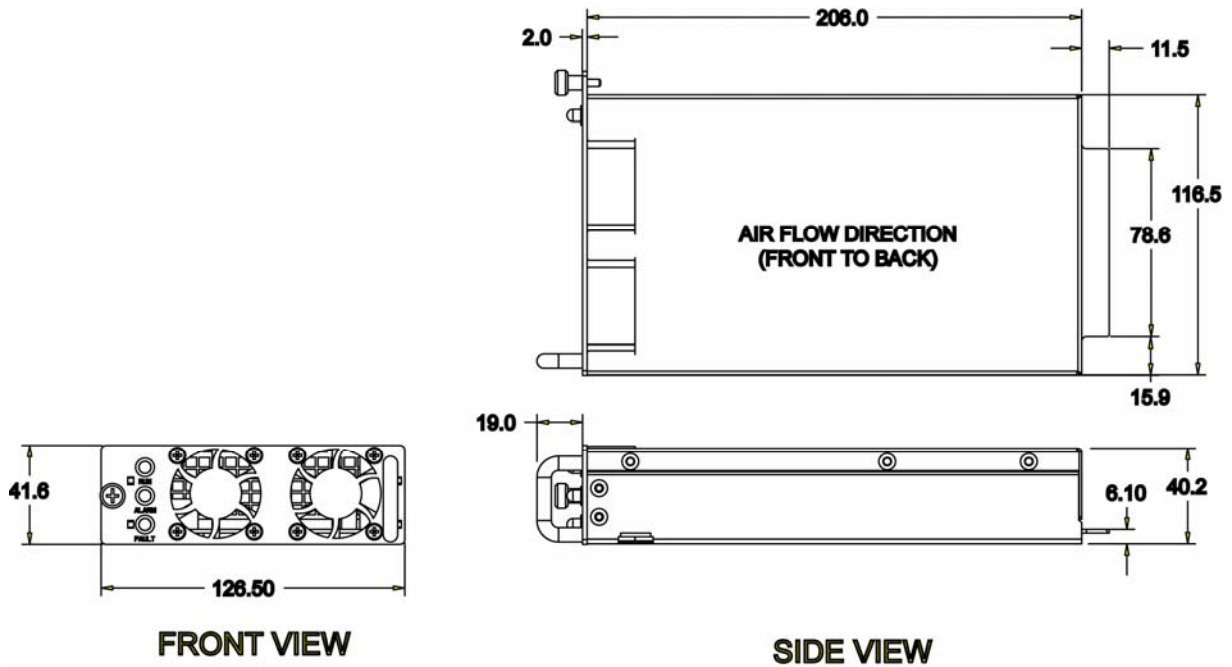
Mechanical	
Length (in./mm)	8.10 / 208.0
Width (in./mm)	4.98 / 126.5
Height (in./mm)	1.58 / 40.2
Weight (lb / kg)	3.08 / 1.4

Safety and Standards Compliance	
NEBs	Evaluated by independent NRTL test lab to Telcordia GR63 and GR1089-CORE, Issue 4
Safety	CE mark to Low Voltage Directive 2006/95/EC and EMC Directive 2004/108/E UL 609501-1 Recognized CSA C22.2 No. 60950-1-03 Certified VDE0805:200112 (EN 609501) Licensed
RoHS	Compliant to RoHS EU Directive 2002/95/EC
EMC	FCC and EN 55022, Class B; FCC, Class B
ESD	EN61000-4-2, Level 4




Environmental	
Operating Temperature	-40C to +65C
Storage Temperature	-40C to +70C
Power Derating	> +55C
Relative Humidity	95% max, non-condensing
Altitude	4000m max
Audible Noise	< 55dBA

Control and Monitoring	
Visual Status Indicators	Run, Alarm and Fault LEDs
Serial Interface	Half duplex RS485 (GP Protocol)

outline drawing



ordering and related products information

Product	Description	Ordering Code	
EP0800-U	Rectifier	CC109142304	
J2007003	Ordering Guide for SPS Shelves	ESOG SPS shelf	
SPS841A	Galaxy Pulsar Edge for SPS	ESDS Galaxy Pulsar Edge SPS841A	

additional information

service and support

Lineage Power provides comprehensive service offerings that range from Professional Services to engineer, furnish, and install customer power infrastructures, to customized technical training, and remote monitoring/management services all tailored to individual customer needs. Please contact your Lineage Power account executive for more information about service, support and training options.

Lineage (凌骥)中国区授权代理商:

深圳市中电华星电子技术有限公司

TEL: (0755) 82531600 82531601
Email: sales@ce-power.com

Fax: (0755) 82531605
Website: www.ce-power.com

